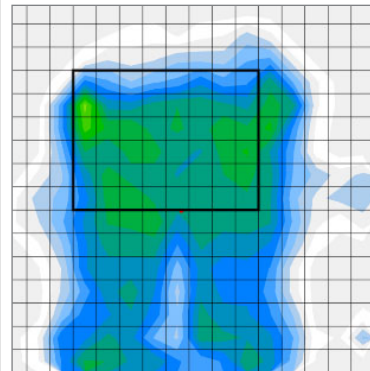


MATRIX®  
**MAC BACK**  
ADJUSTABLE CONTOUR



Introducing a whole new approach to bespoke back support, the **Matrix MAC Adjustable Contour Back Series!** Completely configurable for the widest range of body shapes and conditions, and adjustable for changes, the MAC back offers a whole new way to provide custom fit, positioning and comfort!

**Call to order**

**US: 1.888.433.6818 | CAN: 1.866.748.7943**  
motionconcepts.com



### Center Panel

- Dual Layer Foam or HUG StaminaFibre® Model

### Headrest Interface

- Heavy-duty interface included

### Lateral Contours

- 3 Contour depth options, height and width adjustable

### EasySet Hardware

- Height, depth, angle and rotation adjustable

## LATERAL CONTOUR OPTIONS



### Width Adjustment

- Allows 1/2" of width adjustment on each side, total 1" growth adjustment

### Height Adjustment

- Lateral contours height adjustable with user seated in the back



### Installation Tool

- Provides ease of setup aligning hardware and lateral contours during installation

### MAC - DUAL LAYER FOAM MODEL



Supersoft/firm HR foam layers for comfort and support



- Supersoft over firm HR double layer foam
- Support and comfort even in tilt/recline applications
- **Recommended for symmetrical postural presentation**

### MAC - HUG MODEL



Soft, conformable StaminaFibre® for maximum immersion and envelopment



- StaminaFibre® insert, machine wash and dry friendly
- Highly immersive micro climate control
- **Recommended for accommodation of mild postural asymmetries**

### SHAPE insert

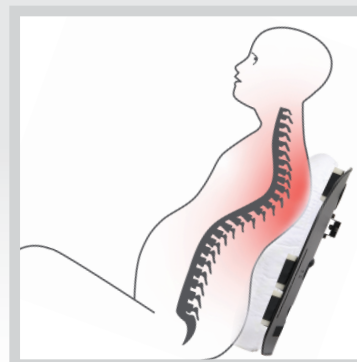
- Customizable shape interface for accommodation of orthopedic asymmetries



### MAC - HUG MODEL/SHAPE



SHAPE Insert layered under HUG StaminaFibre®



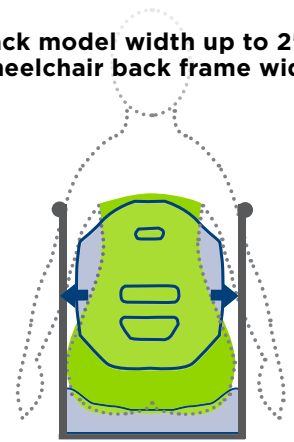
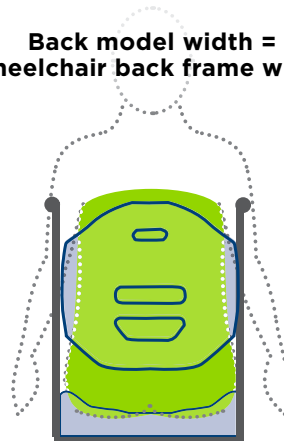
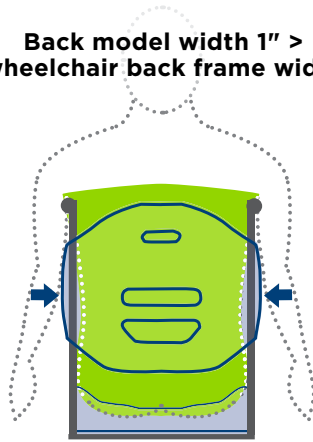
- Positioning interface with configurable HR foam pieces
- Easily adjustable for future changes
- **Recommended for accommodation of moderate postural asymmetries**

**Easy slide mounting pin Assembly**

**Back model width 1" > wheelchair back frame width**

**Back model width = wheelchair back frame width**

**Back model width up to 2" < wheelchair back frame width**

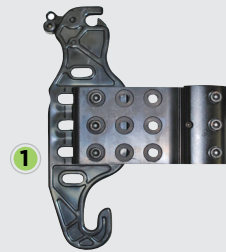


**BACK SIZES**

		WIDTH				
		16"	17"	18"	19"	20"
LENGTH	FITS W/C	15"-18"	16"-19"	17"-20"	18"-21"	19"-22"
	16"	•	•	•	•	•
	18"	•	•	•	•	•
	20"	•	•	•	•	•
	22"	•	•	•	•	•

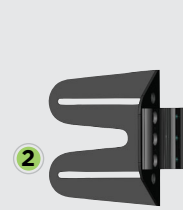
• Up to 300 lb weight capacity

**OPTIONAL HARDWARE**



**1. Extended Range EasySet**

• Provides 4" forward or rear depth adjustment



**2. Fixed EasySet**

• Recommended for tilt/recline applications  
• Requires tools for removal



**3. Heavy-Duty EasySet**

• Recommended for users with high tone or heavy intended use



**4. Split**

• Allows clearance of frame obstacles, quick release



**PostureFlex**

Comfortable, quick release anterior trunk (abdominal) supports. Available in 2 sizes.



**Quad Release Tab**

Quad release tab for PostureFlex.



**PostureFlex Tether Strap**

Required to mount PostureFlex. Compatible with MAC - 3.5" Contour Laterals.



**BackBone**

Contoured PSIS/Sacrolumbar Support.



**Matrix Privacy Flaps**

Easy attachment to all Matrix Backs with existing sewn on hook & loop. Available in 4 sizes.



**Chest Harness Interface**

Allows precise placement of Shoulder Strap Guides for Chest harnesses. Available in 2 sizes.

**Motion Concepts**  
www.motionconcepts.com  
info@motionconcepts.com

**USA**  
700 Ensminger Rd., Suite 112  
Tonawanda, NY 14150  
(888) 433-6818  
Fax: (888) 433-6834

**Canada**  
84 Citation Dr., Unit 1  
Concord, ON L4K 3C1  
(866) 748-7943  
(905)-695-0134  
Fax: 905-695-0138



© 2024 Matrix is a registered trademark of Motion Concepts. Specifications are subject to change without notification.

TRD0733 Rev A